



# GAT MONTHLY MEMBERSHIP PROGRESS REPORT

Results as of: 4/30/2022

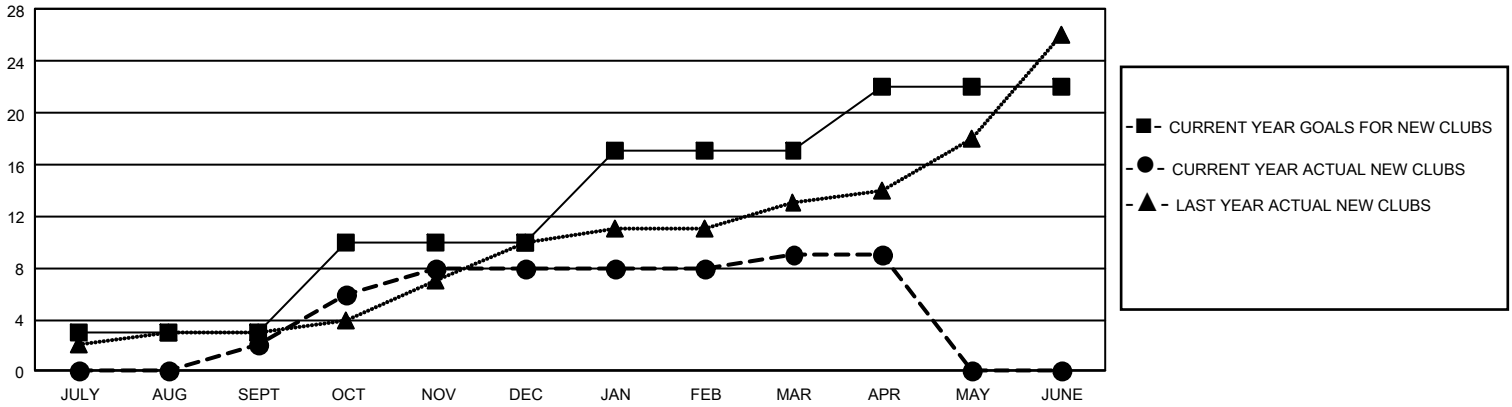
## GMT Constitutional Area 2, Group B

REPORT DOES NOT INCLUDE CLUBS IN UNDISTRICTED AREAS.

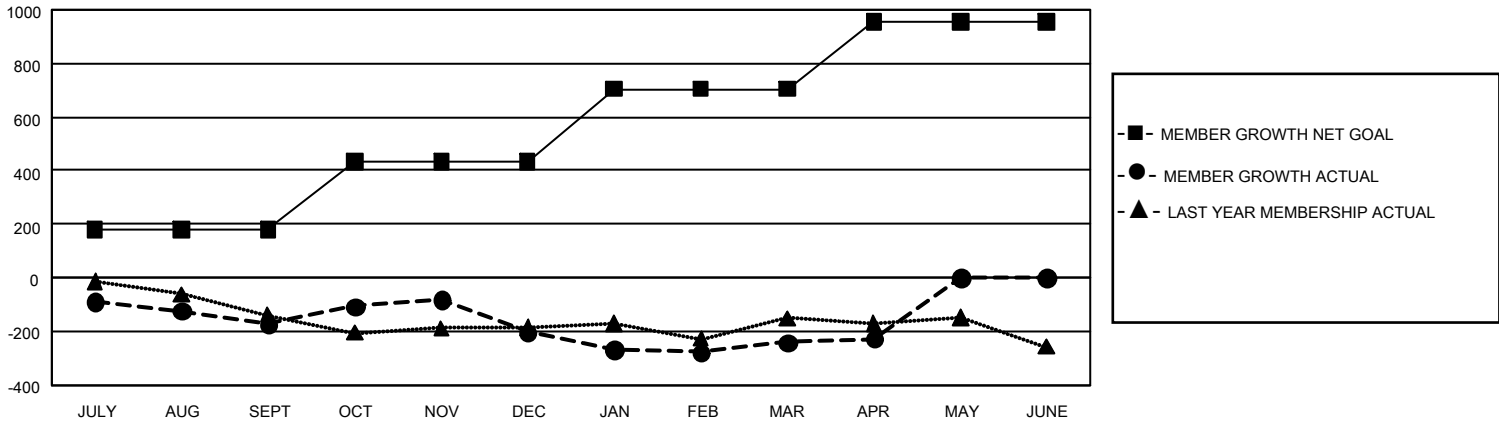
Clubs			
RESULTS FOR 2021-2022			
QUARTER	NEW CLUB GOAL	NEW CLUBS	DROPPED CLUBS
JULY/AUG/SEPT	9	2	3
OCT/NOV/DEC	21	6	6
JAN/FEB/MAR	21	1	3
APR/MAY/JUNE	15	0	0

Members			
RESULTS FOR 2021-2022			
QUARTER	MEMBER GROWTH NET GOAL	MEMBER GROWTH ACTUAL	DROPPED MEMBERS ACTUAL (including transfers)
JULY/AUG/SEPT	180	308	429
OCT/NOV/DEC	255	628	600
JAN/FEB/MAR	270	424	412
APR/MAY/JUNE	250	141	117

GOALS AND ACTUAL NEW CLUBS CUMULATIVE



GOALS AND ACTUAL MEMBERS CUMULATIVE



DROPPED CLUBS: 12	352 CLUBS OF 710 ADDED 1 OR MORE NEW MEMBERS	<u>GENDER DISTRIBUTION</u>	
		MALE	10,324 (64.20%)
<u>DROPPED MEMBERS</u>		FEMALE	5,755 (35.79%)
		NON BINARY	1 (0.01%)
DECEASED	262	PREFER NOT TO ANSWER	1 (0.01%)
CLUB CANCELLED	51	TOTAL FAMILY UNIT MEMBERS	3,071
OTHER	1,246	FAMILY MEMBERS PAYING HALF DUES	1,584
TOTAL	1,559	<a href="#">CLICK HERE FOR CUMULATIVE MEMBERSHIP DATA</a>	